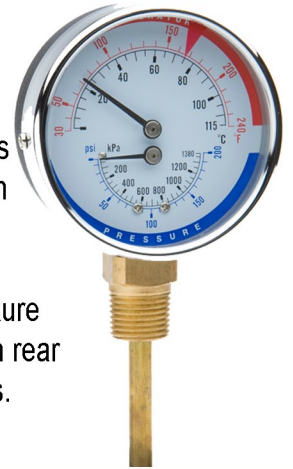




Trerice Tridicators are specifically designed for use with hot water boilers. Tridicators provide both temperature and pressure measurement in unit, which means only one access point is required in the boiler. Water pressure is measured in psi and kPa and temperature in Farenheit and Celsius. The large dial is easy to read and is available in 3.5" and 2.5" sizes. Pressure accuracy is $\pm 3-2-3\%$ of full scale and temperature accuracy is $\pm 2\%$ of full scale. Trerice Tridicators are offered with rear or bottom connections in either standard or extended lengths.



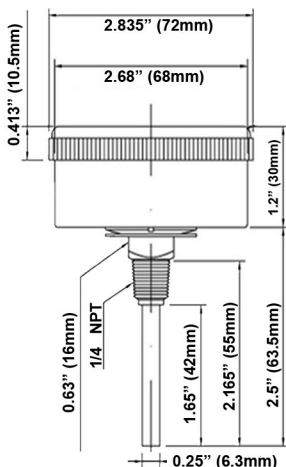
2 1/2" TRIDICATOR

SPECIFICATIONS

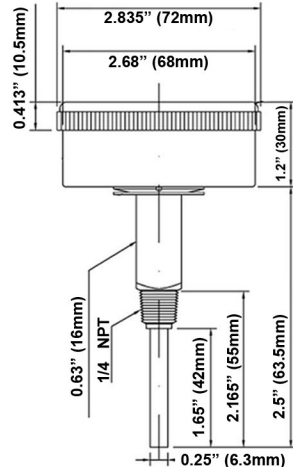
3 1/2" TRIDICATOR

Model	Dial Size	Wetted Parts Connection	Case Window	Pointers Ring	Temperature Accuracy	Pressure Accuracy	Maximum Operating Temperature	Approximate Shipping Weight
140 2 1/2" Rear Connect Tridicator	2 1/2" (68mm)	1/4 NPT	Steel, black painted Acrylic	Steel, black painted Plastic, screwed-on	3% Full Scale Grade B 3-2-3% Grade B	3% Full Scale Grade B 3-2-3% Grade B	2/3 of full scale range	0.3 lbs (0.14 kg)
142 2 1/2" Rear Connect Tridicator w/ Lag	2 1/2" (68mm)	1/4 NPT	Steel, black painted Acrylic	Steel, black painted Plastic, screwed-on	3% Full Scale Grade B 3-2-3% Grade B	3% Full Scale Grade B 3-2-3% Grade B	2/3 of full scale range	0.3 lbs (0.14 kg)
144 3 1/2" Lower Connect Tridicator	3 1/2" (82mm)	1/2 NPT	Steel, black painted Glass	Steel, black painted Steel	3% Full Scale Grade B 3-2-3% Grade B	3% Full Scale Grade B 3-2-3% Grade B	2/3 of full scale range	0.55 lbs (0.25 kg)
146 3 1/2" Rear Connect Tridicator	3 1/2" (82mm)	1/2 NPT	Steel, black painted Glass	Steel, black painted Steel	3% Full Scale Grade B 3-2-3% Grade B	3% Full Scale Grade B 3-2-3% Grade B	2/3 of full scale range	0.55 lbs (0.25 kg)

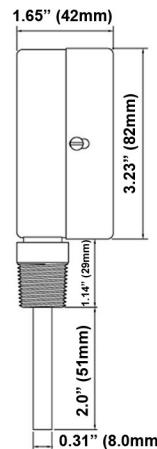
Part Number	Dial Size	Connection	Range
PTC14001	2 1/2" (68mm)	1/4 NPT Rear	30°-240° F/C & 0-75 psi/kPa
PTC14007	2 1/2" (68mm)	1/4 NPT Rear	60°-320° F/C & 0-75 psi/kPa
PTC14201	2 1/2" (68mm)	1/4 NPT Rear with Lag	30°-240° F/C & 0-75 psi/kPa
PTC14401	3 1/2" (82mm)	1/2 NPT Bottom	30°-240° F/C & 0-75 psi/kPa
PTC14403	3 1/2" (82mm)	1/2 NPT Bottom	30°-240° F/C & 0-100 psi/kPa
PTC14405	3 1/2" (82mm)	1/2 NPT Bottom	30°-240° F/C & 0-200 psi/kPa
PTC14601	3 1/2" (82mm)	1/2 NPT Rear	30°-240° F/C & 0-75 psi/kPa
PTC14603	3 1/2" (82mm)	1/2 NPT Rear	30°-240° F/C & 0-100 psi/kPa
PTC14605	3 1/2" (82mm)	1/2 NPT Rear	30°-240° F/C & 0-200 psi/kPa



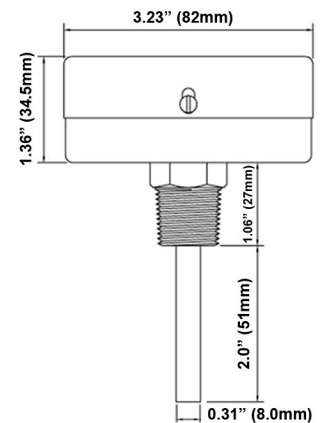
Model 140



Model 142



Model 144



Model 146